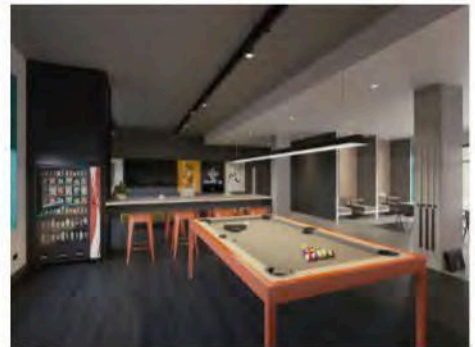
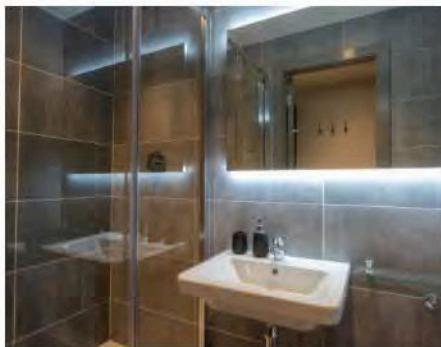
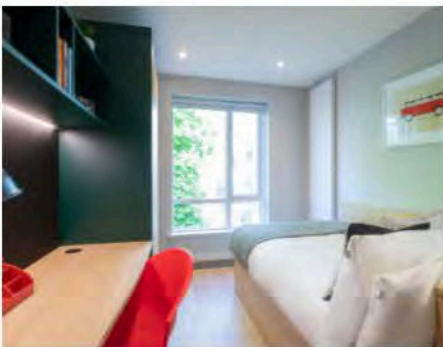
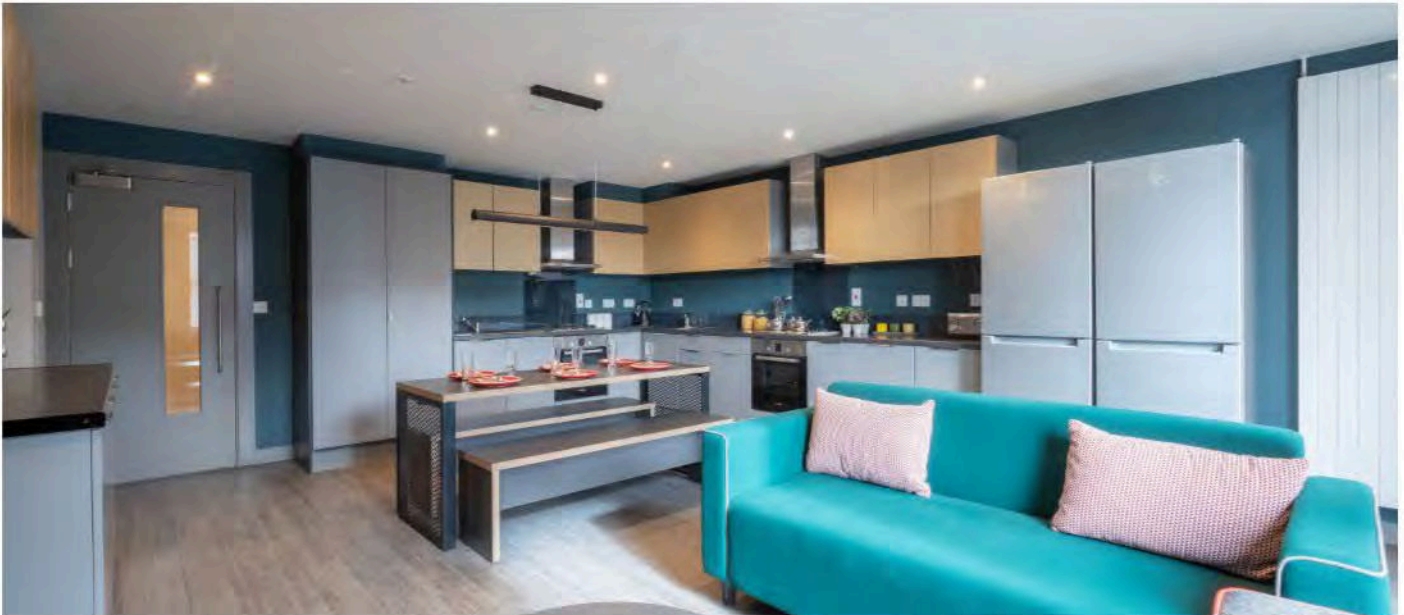


# STUDENT APARTMENTS DUBLIN – HIGHLIGHT



Highlight Student Apartments provides stylish student living. It is ideally located within a 10 minute walk to the city centre and a 20 minute walk to our school.

We offer single en suite rooms in shared self catering apartments. All bedrooms include a bed, wardrobe, work station, study lamp and generous storage.

Each apartment is fully furnished complete with modern kitchen and dining room. In addition, the residence offers a great social space with a TV lounge, pool table, gym and plenty of seating areas.

## WHAT'S INCLUDED

- ✓ En suite single bedrooms
- ✓ Bed linen supplied on arrival
- ✓ Shared kitchen/living spaces & work space
- ✓ Wi-Fi available in all apartments
- ✓ 24 hour on-site security
- ✓ Dedicated staff member living on-site
- ✓ Laundry facilities
- ✓ Games room
- ✓ Gym



# FREQUENTLY ASKED QUESTIONS

## 1. How many students share an apartment?

You will be sharing the apartment with 5 to 6 students.

## 2. What deposit do I need?

€100 deposit is required on arrival.

## 3. What is the check-in and check-out times?

**Check in time:** After 2pm **Check out time:** Before 10am.

## 4. Who will welcome me when I arrive?

A staff member living on site who will welcome you when you arrive.

## 4. Is bed linen and towels provided?

Bed linen is provided. We advise students to bring their own towel/s.

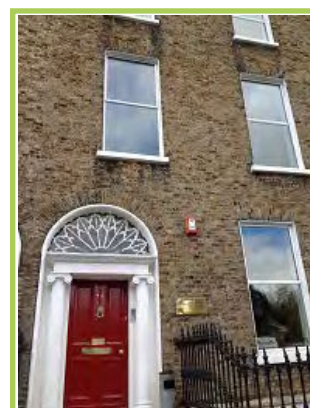
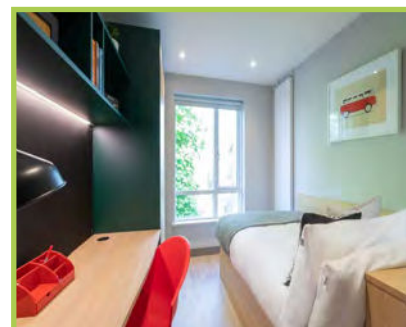
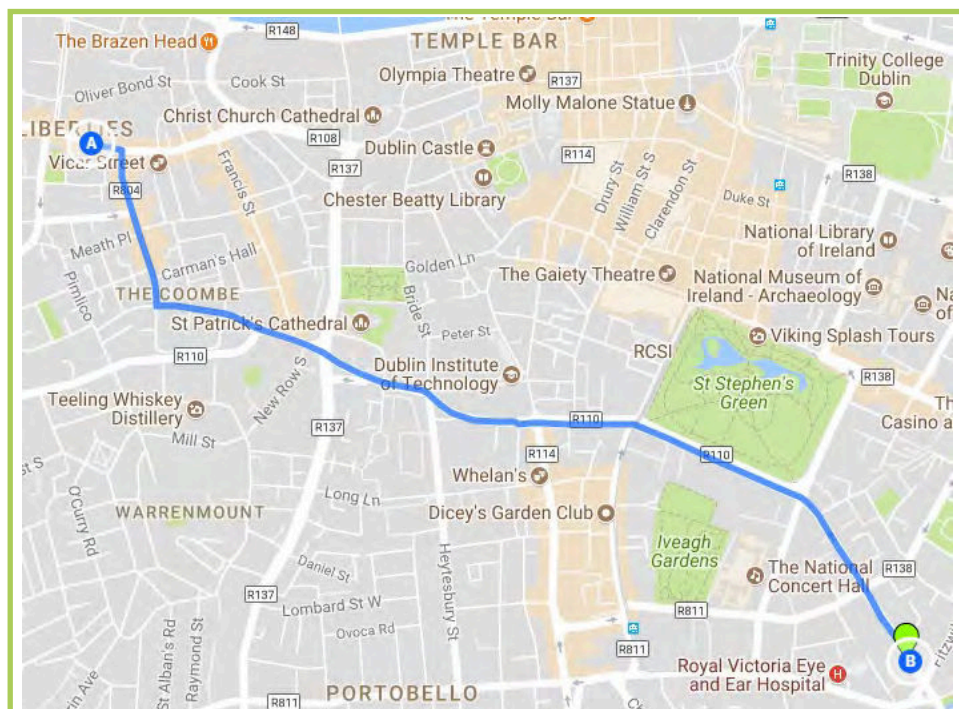
## 5. Is there security in the building?

There is 24 hour security in the apartment complex.

## 6. Is there somewhere I can wash my clothes?

We have laundry facilities on site. Approximately €3 to wash clothes and €3 to dry clothes.

## WALKING DIRECTIONS



Head east on Thomas St/R810 toward Meath St/R804  
67 m

Turn right onto Meath St/R804 Continue to follow Meath St  
342 m

Turn left onto The Coombe  
309 m

Continue onto Dean St/R110 Continue to follow R110  
1.16 km

Continue straight onto Leeson Street Lower/R138  
422 m